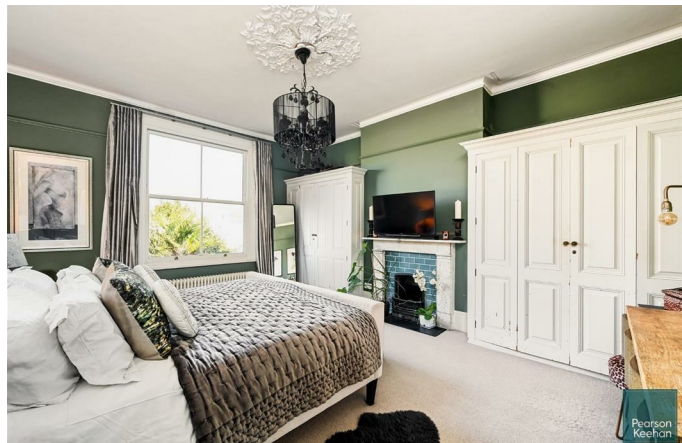




35 Denmark Villas
Hove, BN3 3TD

Pearson
Keehan



35 Denmark Villas

Hove, BN3 3TD

A substantial four/five bedroom semi-detached Victorian Villa boasting abundant character, with generously sized west-facing rear garden situated in the heart of Hove being moments from Hove railway station.

Denmark Villas is situated in central Hove, south of Hove Station, offering quick access to the bustling Church Road, where you'll discover a variety of trendy coffee shops, bars, and restaurants. Hove seafront is also conveniently close by, along with several esteemed local schools.

This grand period home with a bay frontage offers expansive living accommodation spread across four floors, making it an ideal and adaptable family residence.

As you step into the property, you're welcomed by a cosy and inviting hallway, providing access to all the rooms on the ground floor. Towards the front of the house is a generously sized living room featuring stunning bay sash windows, while a separate family room sits behind it. The family room boasts floor-to-ceiling window and doors that open up onto the cast iron terrace, offering picturesque views of the rear garden. Completing the ground floor accommodation is a study, and the spacious cloak room.

The lower ground floor hosts the open-plan kitchen and family room, an ideal space for spending quality time with the family and for entertaining guests. This spacious room features a log burner, a designated utility area, and double doors that lead out to the rear garden, adding to the overall charm.

Three of the four bedrooms are located on the first floor, all of which are double bedrooms as well as the family bathroom and an additional shower room. The second floor of the house reveals further bedroom, with ample built-in storage and cloak room.

The spacious rear garden faces west and is notably large, especially considering its central location. It offers a peaceful setting for outdoor dining and relaxation with mature trees, borders, and shrubbery that enhance privacy and seclusion.

